



**INTERIM RESULTS 2005/6
ADDITIONAL INFORMATION**

Group Income Statement	Page 1
UK Sales Analysis	Page 2
International Sales Growth	Page 3
Group Space Summary - Actual and Forecast	Page 4
UK Space Summary - Actual and Forecast	Page 5
Asia Space Summary - Actual to 13th August 2005	Page 6
Asia Space Summary - Forecast to 25th February 2006	Page 7
Europe Space Summary - Actual to 13th August 2005	Page 8
Europe Space Summary - Forecast to 25th February 2006	Page 9
Earnings per share	Page 10

INVESTOR CONTACTS:

Steve Webb	+44 (0) 1992 644 800
Chris Griffith	+44 (0) 1992 644 116
Nicola Chambers	+44 (0) 1992 646 663
Anna Margot	+44 (0) 1992 646 484

GROUP INCOME STATEMENT

		24 weeks to 13 Aug 2005	24 weeks to 14 Aug 2004 Restated***	year-on-year change
		£m	£m	
Sales (inc VAT)	UK	14,570	13,113	11.1%
	Asia *	1,922	1,530	25.6%
	Rest of Europe **	<u>2,325</u>	<u>1,852</u>	<u>25.5%</u>
	International	<u>4,247</u>	<u>3,382</u>	<u>25.6%</u>
	Total Group	<u>18,817</u>	<u>16,495</u>	<u>14.1%</u>
Revenue (ex VAT)	UK	13,394	12,079	10.9%
	Asia	1,803	1,435	25.6%
	Rest of Europe	<u>2,040</u>	<u>1,629</u>	<u>25.2%</u>
	International	<u>3,843</u>	<u>3,064</u>	<u>25.4%</u>
	Total Group	<u>17,237</u>	<u>15,143</u>	<u>13.8%</u>
Operating profit	UK	801	672	19.2%
	Asia	80	66	21.2%
	Rest of Europe	<u>83</u>	<u>66</u>	<u>25.8%</u>
	International	<u>163</u>	<u>132</u>	<u>23.5%</u>
	Total Group	<u>964</u>	<u>804</u>	<u>19.9%</u>
<i>Margin</i>	<i>UK</i>	<i>6.0%</i>	<i>5.6%</i>	
	<i>Asia</i>	<i>4.4%</i>	<i>4.6%</i>	
	<i>Rest of Europe</i>	<i><u>4.1%</u></i>	<i><u>4.1%</u></i>	
	<i>International</i>	<i><u>4.2%</u></i>	<i><u>4.3%</u></i>	
	<i>Total Group</i>	<i><u>5.6%</u></i>	<i><u>5.3%</u></i>	
Share of post-tax profit from Joint Ventures and Associates	26	32	(18.8)%	
Finance costs	(132)	(116)	(13.8)%	
Finance income	50	45	11.1%	
Profit before tax	<u>908</u>	<u>765</u>	<u>18.7%</u>	
Taxation	(265)	(220)	(20.5)%	
Profit for the period	<u>643</u>	<u>545</u>	<u>18.0%</u>	
Attributable to:				
Equity holders of the parent	641	543	18.0%	
Minority Interests	2	2	0.0%	
Basic earnings per share (pence)	8.22	7.07	16.3%	
Diluted earnings per share (pence)	8.10	7.00	15.7%	
Dividend per share (pence)	2.53	2.29	10.5%	

* Asia consists of Thailand, South Korea, Malaysia, Taiwan and Japan for the 6 months to 30/06/05.

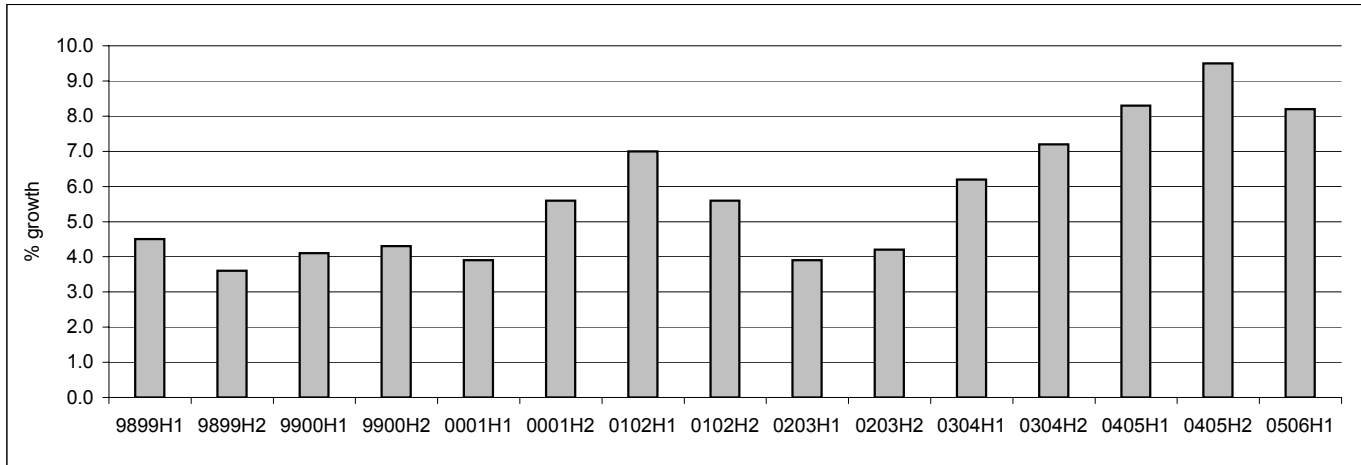
** Rest of Europe consists of operations in Hungary, Poland, Czech Republic, Slovakia and Turkey for the 6 months to 30/06/05 and in the Republic of Ireland for the 24 weeks to 13/08/05.

*** Restated for the adoption of International Financial Reporting Standards.

UK SALES PERFORMANCE

	Quarter 1 2005/06 %	Quarter 2 2005/06 %	First half 2005/06 %	First half 2004/05 %
Inflation	(0.5)	(0.5)	(0.5)	0.3
Volume	9.3	8.1	8.7	8.0
Existing stores	8.8	7.6	8.2	8.3
Net new stores	2.5	3.3	2.9	3.2
Total 24 weeks	11.3	10.9	11.1	11.5

UK HALF YEAR LIKE FOR LIKE GROWTH



UK SALES AREA BY SIZE OF STORE

	August 2005			February 2005		
	No. of stores	million sq ft	% of total	No. of stores	million sq ft	% of total
0-3000 sq ft	1,107	1.9	7.5%	1,074	1.8	7.4%
3,001-20,000 sq ft	232	2.9	11.9%	229	2.9	11.9%
20,001-40,000 sq ft	264	7.7	31.4%	266	7.8	32.4%
40,001-60,000 sq ft	156	7.6	30.7%	153	7.5	30.9%
Over 60,000 sq ft	60	4.6	18.5%	57	4.2	17.4%
	1,819	24.7	100.0%	1,779	24.2	100.0%

INTERNATIONAL SALES PERFORMANCE**(ROI: 24 wks to 13th August 2005, Asia & Central Europe: 6 months to 30th June 2005)**

		SALES GROWTH (inc VAT)				TURNOVER (ex VAT)			
		CONSTANT RATES			ACTUAL RATES				
		like for like %	new stores %	total %	total %	in local currency m	£m	average exchange rate	closing exchange rate
Japan	TY	(5)	35	30	30	29,583	149	198.60	198.60
	LY	n/a	n/a	n/a	n/a	22,937	116	198.25	197.01
Malaysia	TY	18	51	69	65	456	64	7.114	6.807
	LY	(4)	26	22	7	276	40	6.900	6.900
South Korea	TY	6	14	20	34	1,913,446	1,008	1,898.0	1,854.0
	LY	1	21	22	12	1,593,582	751	2,121.1	2,099.2
Taiwan	TY	1	18	19	23	3,946	67	58.78	56.69
	LY	12	28	40	30	3,312	55	60.60	61.30
Thailand	TY	2	8	10	8	37,761	513	73.66	74.00
	LY	1	11	12	6	34,378	473	72.60	74.40
Czech Republic	TY	3	4	7	18	8,765	200	43.85	44.53
	LY	(7)	14	7	2	7,927	164	48.30	47.60
Hungary	TY	2	14	16	22	175,631	487	360.7	365.2
	LY	4	19	23	17	151,604	400	379.2	373.8
Poland	TY	5	15	20	42	2,504	421	5.949	5.980
	LY	2	6	8	(4)	2,096	297	7.060	6.720
Slovakia	TY	7	10	17	25	9,816	174	56.31	56.74
	LY	(6)	24	18	18	8,211	137	60.00	59.40
Turkey	TY	7	4	11	37	194	81	2.379	2.379
	LY	n/a	n/a	n/a	n/a	166	62	2.600	2.700
Republic of Ireland	TY	6	12	18	21	999	683	1.462	1.461
	LY	3	9	12	7	852	569	1.500	1.490

GROUP SPACE SUMMARY - 2005/06**Actual at 13th August 2005**

NUMBER OF STORES

	2004/05 year-end	openings	acquisitions	closures / disposals	2005/06 half year	% of group
UK	1,779	51	-	(11)	1,819	73.7%
Europe	295	11	-	(1)	305	12.4%
Asia	291	44	12	(4)	343	13.9%
Group	2,365	106	12	(16)	2,467	100.0%

SPACE - '000 sq ft

	2004/05 year-end	openings	acquisitions	closures / disposals	extensions/ adjustments	2005/06 half year	
UK	24,191	503	-	(91)	127	24,730	46.1%
Europe	14,392	332	-	(5)	(36)	14,683	27.4%
Asia	13,189	757	284	(31)	(20)	14,179	26.5%
Group	51,772	1,592	284	(127)	71	53,592	100.0%

Forecast to 25th February 2006

NUMBER OF STORES

	2005/06 half year	openings	acquisitions	closures / disposals	2005/06 year-end	
UK	1,819	73	-	(13)	1,879	70.0%
Europe	305	47	9	-	361	13.4%
Asia	343	108	-	(5)	446	16.6%
Group	2,467	228	9	(18)	2,686	100.0%

SPACE - '000 sq ft

	2005/06 half year	openings	acquisitions	closures / disposals	extensions/ adjustments	2005/06 year-end	
UK	24,730	772	-	(101)	555	25,956	44.3%
Europe	14,683	1,817	63	-	-	16,563	28.2%
Asia	14,179	2,040	-	(92)	-	16,127	27.5%
Group	53,592	4,629	63	(193)	555	58,646	100.0%

UK SPACE SUMMARY**Actual at 13th August 2005**

NUMBER OF STORES

	2004/05 year-end	openings Q1	openings Q2	acquisitions	closures / disposals	extensions / conversions	2005/06 half year
Extra	100	-	3	-	-	1	104
Superstore	446	1	3	-	(2)	(1)	447
Metro	160	2	2	-	(2)	-	162
Express	546	9	18	-	(2)	18	589
Total Tesco	1,252	12	26	-	(6)	18	1,302
One Stop	527	4	9	-	(5)	(18)	517
Total UK	1,779	16	35	-	(11)	-	1,819

SPACE - '000 SQ FT

	2004/05 year-end	openings Q1	openings Q2	acquisitions	closures / disposals	extensions / conversions	2005/06 half year
Extra	6,584	-	222	-	-	160 *	6,966
Superstore	13,892	18	140	-	(73)	(33)	13,944
Metro	1,894	22	17	-	(5)	-	1,928
Express	1,080	23	44	-	(5)	28	1,170
Total Tesco	23,450	63	423	-	(83)	155	24,008
One Stop	741	5	12	-	(8)	(28)	722
Total UK	24,191	68	435	-	(91)	127	24,730

Forecast to 25th February 2006

NUMBER OF STORES

	2005/06 half year	openings Q3	openings Q4	acquisitions	closures / disposals	extensions / conversions	2005/06 year-end
Extra	104	2	2	-	-	11	119
Superstore	447	9	5	-	(3)	(11)	447
Metro	162	-	-	-	-	-	162
Express	589	17	28	-	(2)	13	645
Total Tesco	1,302	28	35	-	(5)	13	1,373
One Stop	517	5	5	-	(8)	(13)	506
Total UK	1,819	33	40	-	(13)	-	1,879

SPACE - '000 SQ FT

	2005/06 half year	openings Q3	openings Q4	acquisitions	closures / disposals	extensions / conversions	2005/06 year-end
Extra	6,966	117	116	-	-	967 #	8,166
Superstore	13,944	264	149	-	(84)	(420)	13,853
Metro	1,928	-	-	-	-	8	1,936
Express	1,170	42	68	-	(5)	20	1,295
Total Tesco	24,008	423	333	-	(89)	575	25,250
One Stop	722	8	8	-	(12)	(20)	706
Total UK	24,730	431	341	-	(101)	555	25,956

* In H1, there is 1 conversion from Superstore to Extra and 6 extensions to existing Extras

In H2 there are 11 conversions from Superstores to Extras and 14 extensions to existing Extras

ASIA SPACE SUMMARY**Actual at 30th June 2005****NUMBER OF STORES**

	2004/05 year-end	openings Q1	openings Q2	acquisitions	extensions / adjustments	closures / disposals	2005/06 half year
China							
- hypermarkets	31	2	-	-	-	-	33
Japan							
- other	104	-	3	-	-	(4)	103
Malaysia							
- hypermarkets	6	1	-	-	-	-	7
- other	-	-	-	-	-	-	-
South Korea							
- hypermarkets	31	2	-	3	-	-	36
- other	7	-	3	9	-	-	19
Taiwan							
- hypermarkets	5	1	-	-	-	-	6
Thailand							
- hypermarkets	61	1	2	-	-	-	64
- other	46	12	17	-	-	-	75
TOTAL ASIA							
- hypermarkets	134	7	2	3	-	-	146
- other	157	12	23	9	-	(4)	197
TOTAL ASIA	291	19	25	12	-	(4)	343

SPACE - '000 SQ FT

	2004/05 year-end	openings Q1	openings Q2	acquisitions	extensions / adjustments	closures / disposals	2005/06 half year
China							
- hypermarkets	2,637	222	-	-	-	-	2,859
Japan							
- other	385	-	13	-	-	(31)	367
Malaysia							
- hypermarkets	584	97	-	-	-	-	681
- other	-	-	-	-	-	-	-
South Korea							
- hypermarkets	3,172	98	-	146	-	-	3,416
- other	40	-	12	138	-	-	190
Taiwan							
- hypermarkets	452	52	-	-	(20)	-	484
Thailand							
- hypermarkets	5,806	29	140	-	-	-	5,975
- other	115	58	36	-	-	-	209
TOTAL ASIA							
- hypermarkets	12,650	498	140	146	(20)	-	13,414
- other	539	58	61	138	-	(31)	765
TOTAL ASIA	13,189	556	201	284	(20)	(31)	14,179

ASIA SPACE SUMMARY**Forecast to 31st December 2005****NUMBER OF STORES**

	2005/06 half year	openings Q3	openings Q4	acquisitions	extensions / adjustments	closures / disposals	2005/06 year-end
China							
- hypermarkets	33	3	4	-	-	(1)	39
Japan							
- other	103	-	8	-	-	-	111
Malaysia							
- hypermarkets	7	1	2	-	-	-	10
- other	-	2	1	-	-	-	3
South Korea							
- hypermarkets	36	2	1	-	-	-	39
- other	19	2	4	-	-	(4)	21
Taiwan							
- hypermarkets	6	-	-	-	-	-	6
Thailand							
- hypermarkets	64	2	7	-	-	-	73
- other	75	33	36	-	-	-	144
TOTAL ASIA							
- hypermarkets	146	8	14	-	-	(1)	167
- other	197	37	49	-	-	(4)	279
TOTAL ASIA	343	45	63	-	-	(5)	446

SPACE - '000 SQ FT

	2005/06 half year	openings Q3	openings Q4	acquisitions	extensions / adjustments	closures / disposals	2005/06 year-end
China							
- hypermarkets	2,859	328	385	-	-	(67)	3,505
Japan							
- other	367	-	24	-	-	-	391
Malaysia							
- hypermarkets	681	97	119	-	-	-	897
- other	-	23	11	-	-	-	34
South Korea							
- hypermarkets	3,416	180	33	-	-	-	3,629
- other	190	8	16	-	-	(25)	189
Taiwan							
- hypermarkets	484	-	-	-	-	-	484
Thailand							
- hypermarkets	5,975	146	378	-	-	-	6,499
- other	209	148	144	-	-	-	501
TOTAL ASIA							
- hypermarkets	13,414	751	915	-	-	(67)	15,013
- other	765	179	195	-	-	(25)	1,114
TOTAL ASIA	14,179	930	1,110	-	-	(92)	16,127

EUROPE SPACE SUMMARY

Actual at 30th June 2005
(ROI to 13th August 2005)

NUMBER OF STORES

	2004/05 year-end	openings Q1	openings Q2	acquisitions	extensions / adjustments	closures / disposals	2005/06 half year
Czech Republic							
- hypermarkets	19	-	1	-	-	-	20
- other	6	-	1	-	-	-	7
Hungary							
- hypermarkets	42	-	2	-	-	-	44
- other	27	-	-	-	-	-	27
Poland							
- hypermarkets	47	-	-	-	(3)	-	44
- other	31	-	2	-	3	-	36
Slovakia							
- hypermarkets	25	-	1	-	-	-	26
- other	5	-	-	-	-	-	5
Turkey							
- hypermarkets	5	-	1	-	-	-	6
TOTAL CENTRAL EUROPE							
- hypermarkets	138	-	5	-	(3)	-	140
- other	69	-	3	-	3	-	75
TOTAL CENTRAL EUROPE	207	-	8	-	-	-	215
Republic of Ireland							
- other	87	2	1	-	-	(1)	89
France							
- other	1	-	-	-	-	-	1
TOTAL EUROPE							
- hypermarkets	138	-	5	-	(3)	-	140
- other	157	2	4	-	3	(1)	165
TOTAL EUROPE	295	2	9	-	-	(1)	305

SPACE - '000 SQ FT

	2004/05 year-end	openings Q1	openings Q2	acquisitions	extensions / adjustments	closures / disposals	2005/06 half year
Czech Republic							
- hypermarkets	1,635	-	32	-	-	-	1,667
- other	510	-	12	-	-	-	522
Hungary							
- hypermarkets	3,377	-	86	-	-	-	3,463
- other	138	-	-	-	-	-	138
Poland							
- hypermarkets	3,878	-	-	-	(108)	-	3,770
- other	334	-	42	-	72	-	448
Slovakia							
- hypermarkets	1,682	-	32	-	-	-	1,714
- other	371	-	-	-	-	-	371
Turkey							
- hypermarkets	406	-	54	-	-	-	460
TOTAL CENTRAL EUROPE							
- hypermarkets	10,976	-	204	-	(108)	-	11,072
- other	1,354	-	54	-	72	-	1,480
TOTAL CENTRAL EUROPE	12,330	-	258	-	(36)	-	12,552
Republic of Ireland							
- other	2,046	43	31	-	-	(5)	2,115
France							
- other	16	-	-	-	-	-	16
TOTAL EUROPE							
- hypermarkets	10,976	-	204	-	(108)	-	11,072
- other	3,416	43	85	-	72	(5)	3,611
TOTAL EUROPE	14,392	43	289	-	(36)	(5)	14,683

EUROPE SPACE SUMMARY

Forecast to 31st December 2005
(ROI to 25th February 2006)

NUMBER OF STORES

	2005/06 half year	openings Q3	openings Q4	acquisitions	extensions / adjustments	closures / disposals	2005/06 year-end
Czech Republic							
- hypermarkets	20	2	6	-	-	-	28
- other	7	-	-	-	-	-	7
Hungary							
- hypermarkets	44	3	11	-	-	-	58
- other	27	-	2	-	-	-	29
Poland							
- hypermarkets	44	1	4	-	-	-	49
- other	36	1	8	9	-	-	54
Slovakia							
- hypermarkets	26	2	4	-	-	-	32
- other	5	-	-	-	-	-	5
Turkey							
- hypermarkets	6	-	-	-	-	-	6
TOTAL CENTRAL EUROPE							
- hypermarkets	140	8	25	-	-	-	173
- other	75	1	10	9	-	-	95
TOTAL CENTRAL EUROPE	215	12	41	9	-	-	277
Republic of Ireland							
- other	89	1	2	-	-	-	92
France	1	-	-	-	-	-	1
TOTAL EUROPE							
- hypermarkets	140	8	25	-	-	-	173
- other	165	2	12	9	-	-	188
TOTAL EUROPE	305	10	37	9	-	-	361

SPACE - '000 SQ FT

	2005/06 half year	openings Q3	openings Q4	acquisitions	extensions / adjustments	closures / disposals	2005/06 year-end
Czech Republic							
- hypermarkets	1,667	96	292	-	-	-	2,055
- other	522	-	-	-	-	-	522
Hungary							
- hypermarkets	3,463	140	592	-	-	-	4,195
- other	138	-	22	-	-	-	160
Poland							
- hypermarkets	3,770	32	269	-	-	-	4,071
- other	448	22	119	63	-	-	652
Slovakia							
- hypermarkets	1,714	64	132	-	-	-	1,910
- other	371	-	-	-	-	-	371
Turkey							
- hypermarkets	460	-	-	-	-	-	460
TOTAL CENTRAL EUROPE							
- hypermarkets	11,072	332	1,285	-	-	-	12,689
- other	1,480	22	141	63	-	-	1,706
TOTAL CENTRAL EUROPE	12,552	354	1,426	63	-	-	14,395
Republic of Ireland							
- other	2,115	19	18	-	-	-	2,152
France	16	-	-	-	-	-	16
TOTAL EUROPE							
- hypermarkets	11,072	332	1,285	-	-	-	12,689
- other	3,611	41	159	63	-	-	3,874
TOTAL EUROPE	14,683	373	1,444	63	-	-	16,563

EARNINGS PER SHARE

			05/06	04/05
			24 wks	24 wks
			£m	£m
<u>EARNINGS</u>				
PROFIT BEFORE TAX			908	765
Tax on profit before tax	TY ERT %	LY ERT %	(265)	(220)
	29.2%	28.8%		
Minority Interest			(2)	(2)
BASIC EARNINGS			641	543
<u>SHARES</u>				
			M	M
Shares in issue at start of year			7,783	7,680
SAYE, Executive Share Option Schemes and QUEST			8	7
Scrip Dividend			12	5
Less : weighted average in QUEST			(5)	(13)
Share Placement			0	0
BASIC weighted average no of shares			7,798	7,679
Weighted average no of options (Million)		A	321	325
Average option price (pence)		B	207.43	193.31
Average share price (pence)		C	316.27	254.70
Dilutory number of shares (Million)		$[A \times (C-B)/C]$	110	78
DILUTED weighted average no of shares			7,909	7,757
BASIC Earnings Per Share	Pence		8.22	7.07
DILUTED Earnings Per Share	Pence		8.10	7.00